

YARNSMITHS



Knit
Intermediate

Create

Rudy
Design N°
7045

Rudy Reindeer Jumper

Materials and Measurements

To fit chest/ bust sizes	76	81	86	91	97	102	107	112	cm
	30	32	34	36	38	40	42	44	ins
Actual Measure- ments	82	87	92	97.5	102.5	107.5	112.5	117.5	cm
	32.25	34.25	36.25	38.25	40.25	42.25	44.25	46.25	ins
Length from back neck	51	56	57	62	64.5	68.5	68.5	68.5	cm
	20	22	22.5	24.5	25.5	27	27	37	ins
Sleeve Seam	40.5	43	44.5	45.5	45.5	47	47	48	cm
	16	17	17.5	18	18	18.5	18.5	19	ins
Yarnsmiths Create DK									
Main	3	4	4	4	4	5	5	5	Balls
Plus 1 Ball of each contrast colour									
Photographed using Shades M 3060 Parchment, 3000 Black, 3040 White, 3080 Chocolate Brown, 3070 Brown Bear, 3100 Scarlet Red 3.25mm (US 3) and 4mm (US 6) Knitting Needles Stitch Holders Optional Pom Pom for Nose									

IMPORTANT

Please note that the limitations of the printing process mean that the actual colour will not always precisely match the colours in the photograph.

Instructions given for smallest size, larger sizes given in brackets. Where only one figure is given this applies to all sizes.

Use only the Yarnsmiths yarn specified. We cannot accept responsibility for an imperfect garment if any other brand is used. It is essential to work to the tension stated. The quantities of yarn stated are based on average requirements and are therefore approximate.

ABBREVIATIONS

K - Knit; **P** - Purl; **st(s)** - stitch(es); **st st** - stocking stitch (1 row knit, 1 row purl); **inc** - increase; **dec** - decrease; **tog** - together; **rept** - repeat; **sl** - slip; **sl 1** - slip one; **psso** - pass slipped stitch over; **tbl** - through back of loop; **beg** -

beginning; **alt** - alternate; **0** - No stitches or rows to be worked in that particular size; **cm** - centimetres; **ins** - inches; **M** - Main colour.

TENSION

It is important to check your tension before commencing the garment. 22 sts and 31 rows to 10 cm (4 ins) over st st using 4mm needles. If there are too many stitches to 10 cm, then your tension is tight and you will need to change your needle to a larger size. If there are too few stitches to 10 cm, then your tension is loose and you will need to change your needle to a smaller size.

When working from a picture chart use a separate ball of yarn for each colour and twist the yarns when changing from one colour to another to avoid leaving holes.

RUDOLF SWEATER

BACK

Using 3.25mm needles and M, cast on 97 (103, 109, 115, 121, 127, 133, 139) sts.

1st row - K1, * P1, K1, rept from * to end.

2nd row - P1, * K1, P1, rept from * to end.

Rept the last 2 rows for 5 (6.5, 6.5, 7.5, 7.5, 7.5, 7.5)cm, 2 (2.5, 2.5, 3, 3, 3, 3)ins, finishing on a 2nd row. Change to 4mm needles.**

Continue in st st until work measures 30.5 (34.5, 34.5, 37, 38, 40.5, 40.5, 40.5)cm 12 (13.5, 13.5, 14.5, 15, 16, 16, 16)ins, from commencement finishing on a P row.

Shape Armholes

Cast off 4 (4, 4, 5, 5, 5, 5) sts at beg of next 2 rows. 89 (95, 101, 105, 111, 117, 123, 129) sts.

Next row - K1, sl 1, K1, psso, K to last 3 sts, K2tog, K1. Work 3 rows. Rept the last 4 rows until 73 (81, 87, 87, 93, 101, 113, 123) sts remain. Work 1 row.

Continue to dec as before on the next and every following alt row until 41 (41, 43, 43, 45, 45, 45, 47) sts remain finishing on a P row. Sl sts onto a st holder. Break off yarn.

FRONT

Work exactly as instructions given for Back to **.

Commence Chart

Continue in st st throughout.

1st row - Work 0 (3, 6, 9, 12, 15, 18, 21) sts, work first row of chart, work 0 (3, 6, 9, 12, 15, 18, 21) sts.

2nd row - Work 0 (3, 6, 9, 12, 15, 18, 21) sts, work second row of chart, work 0 (3, 6, 9, 12, 15, 18, 21) sts.

This sets the position of the chart, continue until work measures 30.5 (34.5, 34.5, 37, 38, 40.5, 40.5, 40.5) cm, 12 (13.5, 13.5, 14.5, 15, 16, 16, 16)ins, from commencement finishing on a P row.

Shape Armholes

Keeping Motif correct, work as Shape Armholes of Back until 61 (63, 67, 67, 71, 71, 71, 73) sts remain finishing on a K row.

Shape Neck

Next row - P4l (42, 44, 44, 46, 46, 46, 47), sl the last 2l sts just worked onto a st holder, P to end. Continue on the last set of sts as follows:- Dec 1 st at armhole edge on the next and every following alt row at the same time dec 1 st at neck edge on the next 5 rows, then on every following alt row until 6 (7, 7, 7, 7, 7, 6) sts remain. Continue to dec at armhole edge only until 2 sts remain finishing on a P row.

K2tog. Fasten off.

With right side facing, rejoin yarn to remaining sts at neck edge.

Work to correspond with other side reversing all shapings and working armhole dec K2tog not sl l, Kl, pssso.

SLEEVES (Both Alike)

Using 3.25mm needles and M, cast on 4l (45, 45, 49, 53, 55, 55, 57) sts. Work 5 (6.5, 6.5, 6.5, 7.5, 7.5, 7.5, 7.5)cm, 2 (2.5, 2.5, 2.5, 3, 3, 3)ins in rib as given for back, finishing on a 1st row.

Next row (Inc row) - Rib 2 (2, 2, 4, 6, 4, 4, 5), inc in next st, * rib 6 (7, 7, 7, 7, 8, 8, 8), inc in next st, rept from *to last 3 (2, 2, 4, 6, 5, 5, 6) sts, rib to end. 47 (51, 51, 55, 59, 61, 61, 63) sts.

Change to 4mm needles.

Continue in st st, inc 1 st at each end of the needle on the 5th and every following 6 (6, 6, 4, 4, 4, 4, 4)th row until 69 (69, 81, 63, 67, 75, 75, 83) sts, then on every following 8 (8, 8, 6, 6, 6, 6, 6)th row until 75 (81, 85, 91, 95, 99, 99, 103) sts are on the needle.

Continue without further inc until sleeve measures 40.5 (43, 44.5, 45.5, 45.5, 47, 47, 48)cm. 16 (17, 17.5, 18, 18, 18.5, 18.5, 19)ins, from commencement finishing on a P row.

Shape Top

Cast off 4 (4, 4, 5, 5, 5, 5) sts at beg of next 2 rows.

(76, 91, 97, 102, 107) cm (30, 36, 38, 40, 42) inch sizes only

Next row - Kl, sl l, Kl, pssso, K to last 3 sts, K2tog, Kl. Work 3

rows.

Rept the last 4 rows (0, l, l, l, l) times more finishing on a P row.

All Sizes

Next row - Kl, sl l, Kl, pssso, K to last 3 sts, K2tog, Kl.

Next row - Purl.

Rept the last 2 rows until 7 sts remain finishing on a P row.

Sl sts onto a safety pin. Break off yarn.

MAKING UP

Join both front raglans and right back raglan by top sewing.

Neckband

With right side facing, using 3.25mm needles and M, K7 sts from left sleeve top, pick up and Kl7 (19, 21, 21, 23, 23, 23, 23) sts down left side neck, K2l sts from front neck st holder, pick up and Kl8 (20, 22, 22, 24, 24, 24, 24) sts up right side neck, K7 sts from right sleeve top, K4l (41, 43, 43, 45, 45, 45, 47) sts from back neck st holder. 111 (115, 121, 121, 127, 127, 127, 129) sts. Commencing on a 2nd row, work in rib as given for Back for 3.5 (3.5, 3.5, 3.5, 3.5, 3.5, 3.5, 3.5)cm 1.5 (1.5, 1.5, 1.5, 1.5, 1.5, 1.5, 1.5)ins finishing on a 2nd row. Cast off loosely in rib.

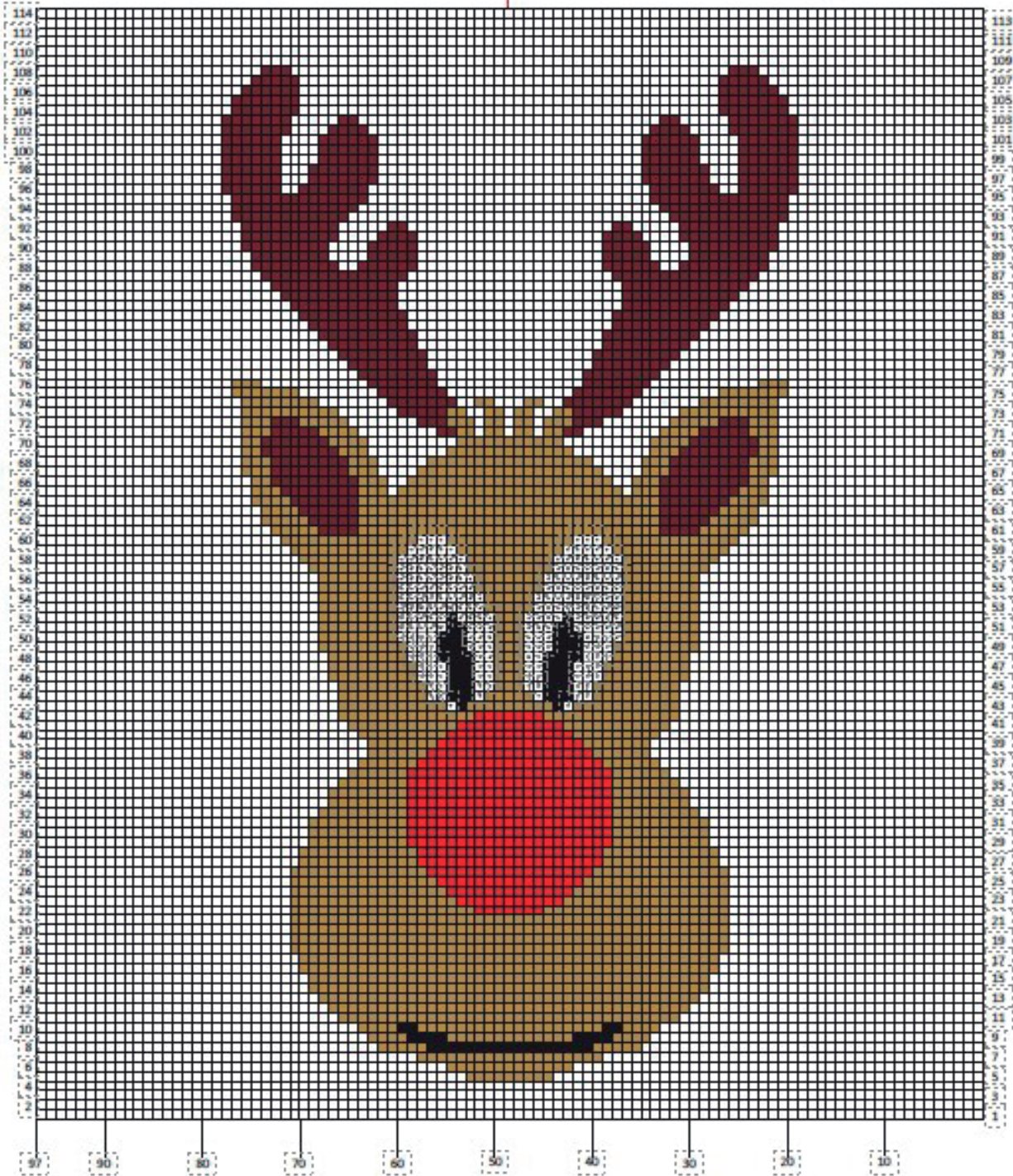
Join left back raglan and neckband by top sewing. Join side and sleeve seams by top sewing.

Attach optional Pom Pom for Nose if required.

Rudolf Chart

Centre Stitch

KEY	
Main	□
A	□
B	■
C	■
D	■
E	■



Email: sales@yarnsmiths.co.uk

© YARNSMITHS All our designs and publications are protected by copyright. Unauthorised copying in any form, is illegal and represents a breach of this copyright. In the event of any unauthorised and illegal copying we reserve the right to take appropriate legal action to protect our interests.